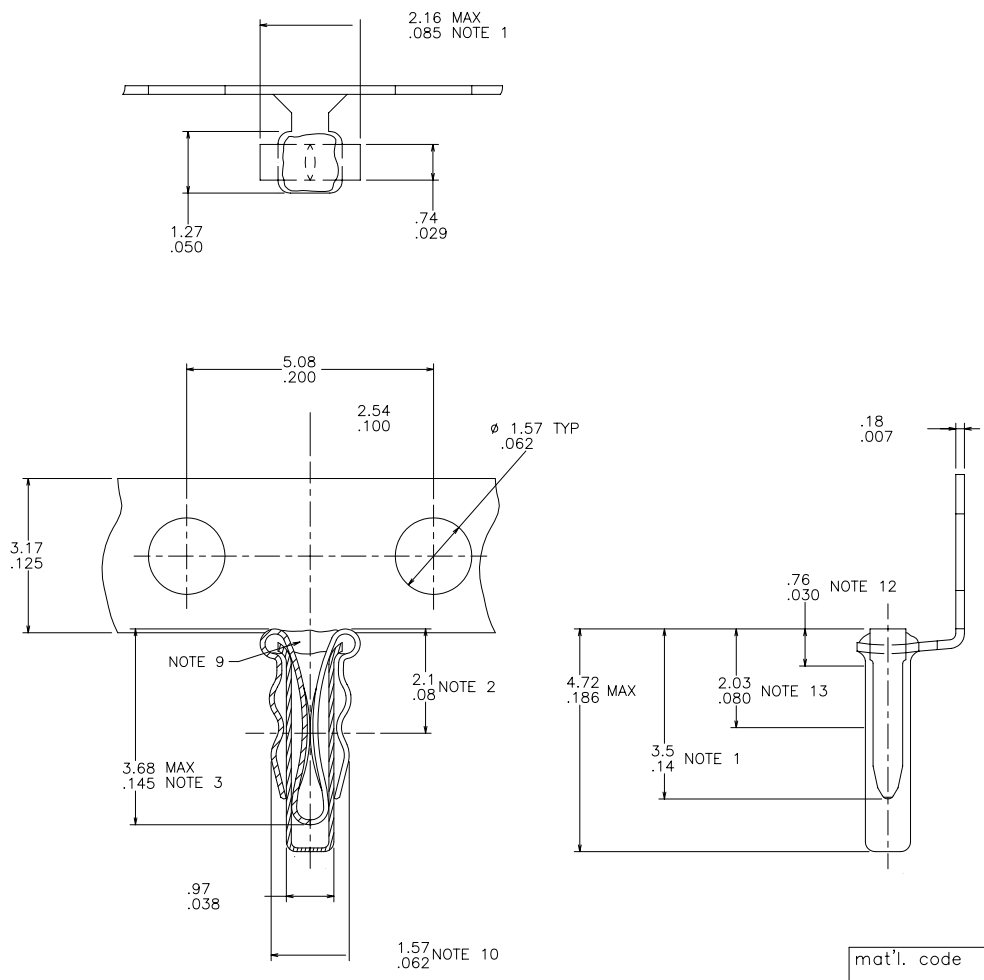


PRODUCT NO.	QTY/REEL
76693-001	25 M
76693-002	5 M



- NOTES:
- ① DIMENSIONS APPLY PRIOR TO INSTALLATION.
 - ② SHOWS CENTERLINE OF THEORETICAL POINT OF CONTACT FROM TOP OF SPRING.
 - ③ SHOWS MAX DEPTH FOR .51/.020 LEAD FROM TOP OF SPRING.
 4. THE SOCKET ASSY SHALL BE MACHINE INSERTABLE AND SELF-RETAINING DURING WAVE SOLDERING IN HOLES FROM 1.27/.050 TO 1.47/.058 DIA.
 5. THE SPRING SHALL SOLDER TO THE CUP DURING WAVE SOLDERING IN SINGLE OR DOUBLE SIDED BOARDS TO 1.57/.062 THK, NO SOLDER SHALL ENTER CUP.
 6. THE SOCKET SHALL ACCEPT ROUND LEADS FROM .30/.012 TO .56/.022 DIA AND FLAT LEADS, WHEN PROPERLY ORIENTED, FROM .20/.008 TO .38/.015 THK BY .38/.015 TO .58/.023 WIDE.
 7. CUP MATERIAL: GILDING MATERIAL PER MIL C21768
SPRING MATERIAL: BeCu PER QQ-C-533
 8. CUP PLATING: TIN-LEAD 60/40, .76 μ /30 μ " MIN THK
SPRING PLATING: 76 μ /30 μ " Au (MIL-G-4520B) TYPE IC, OVER 1.01 μ /40 μ " MICKEL (QQ-N-290).
 - ⑨ RTV APPLIED TO AREA SHOWN TO PREVENT FLUX AND SOLDER FROM ENTERING SOCKET DURING WAVE SOLDERING.
 - ⑩ DIM APPLIES WHEN TIP OF SPRING IS IN CONTACT WITH OUTSIDE OF CUP.
 11. SEE PRODUCT SPECIFICATION NO 12-006 FOR INSERTION/WITHDRAWAL FORCES.
 - ⑫ .76/.030 DIM REFERS TO INSTALLED HEIGHT 1, ABOVE BOARD.
 - ⑬ 2.03/.080 DIM REFERS TO INSTALLED HEIGHT 2, ABOVE BOARD.

FCI
 FCIconnect.com
 Copyright FCI

mat'l. code		surface		tolerance		projection		product family	
-		ISO 1302 <input checked="" type="checkbox"/>		ISO 406				SOCKETS	
F REDRAWN RLS		5/8/87		tolerances unless otherwise specified		MM/INCH		title	
G M06-0278 MHT		7/22/06		angles		.x \pm .25/.01		MINISERT SOCKET ASS'Y	
				linear		.xx \pm .13/.005		dwg no	
				0'±2'		.xxx \pm .051/.0020		sheet 1 of 1 size	
				dr		R.SEIPLE 5/8/87		76693	
				enr		H.SUNDY 5/8/87		A3	
				chr		H.SUNDY 5/8/87		type	
				appd		H.SUNDY 5/8/87		Product Customer Drawing	
sheet index		revision sheet		G					
		1							